



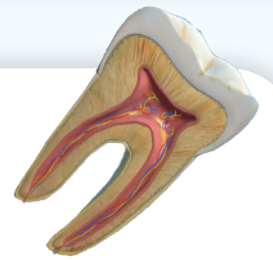
Leopoly Dental

About

Leopoly Dental is a suite of training software available on the zSpace augmented and virtual reality (AR/VR) platform. It consists of multiple 3D educational modules and simulations for both high school students and dental assisting programs.

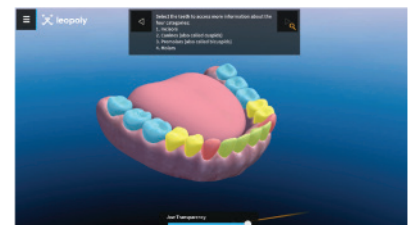
Students examine relevant virtual body structures, learn about dental terminologies, oral diseases, dental procedures and more.

TOOTH ANATOMY



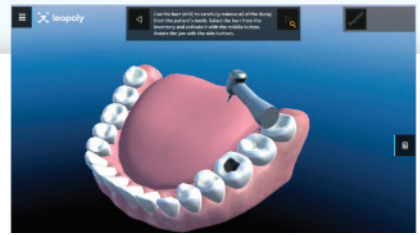
1. Principal parts of the tooth
 - 1.1 Crown
 - 1.2 Neck
 - 1.3 Root
2. Four major tissues
 - 2.1 Enamel
 - 2.2 Dentin
 - 2.3 Cementum
 - 2.4 Pulp
3. Nerve and blood vessels
4. Surrounding area of the tooth
 - 4.1 Gingiva
 - 4.2 Alveolar bone
 - 4.3 Periodontal ligament
5. Root canal, apical foramen, gingival sulcus
6. Periodontium

PERMANENT TEETH



1. Permanent mandibular and maxillary teeth
2. Permanent teeth classification: Incisors, canines, premolars, molars
3. Classification: Posterior teeth and anterior teeth
4. Quadrants
5. Teeth names
6. Functionalities: Cutting, gripping and tearing, tearing and crushing, crushing and grinding
7. Designation of tooth surfaces
8. Notion systems (for the permanent teeth)

DECIDUOUS TEETH



1. Deciduous mandibular and maxillary teeth
2. Similarities and differences between the permanent and deciduous teeth
3. Eruption patterns
 - 3.1 Eruption times (deciduous teeth)
 - 3.2 Shedding times (both permanent and deciduous teeth)
4. Recognizing certain teeth types on a panoramic dental x-ray image (mixed dentition)
5. Notion systems (for the deciduous teeth)

DENTAL PROCEDURES

1. Tooth decay
2. Causes and prevention of tooth decay
3. Dental fillings (composite vs amalgam, direct vs indirect restoration technique)
4. Step by step procedure of a typical direct tooth restoration procedure
5. Calculus (Tartar) removal procedure.

